

Implementing employment intensive road works

A cidb practice manual

Contributing to contractor development in job creation

WORKSHOP DRAWINGS

Published by the Construction Industry Development Board (cidb)

Private Bag X14, Brooklyn Square, 0075

Copyright vests in the cidb

© 2007, cidb, Pretoria

ISBN: 978-0-620-38198-7

MARCH 2007

cidb is a public entity established in terms of the CIDB Act, 2000 to provide strategic direction for sustainable growth, reform and improvement of the construction sector and its enhanced role in the country's economy. In pursuit of this aim cidb partners with stakeholders and regulates the construction industry around a common development agenda underpinned by best practice procurement and project processes.

Construction Industry Development Board

Private Bag X14, Brooklyn Square, 0075

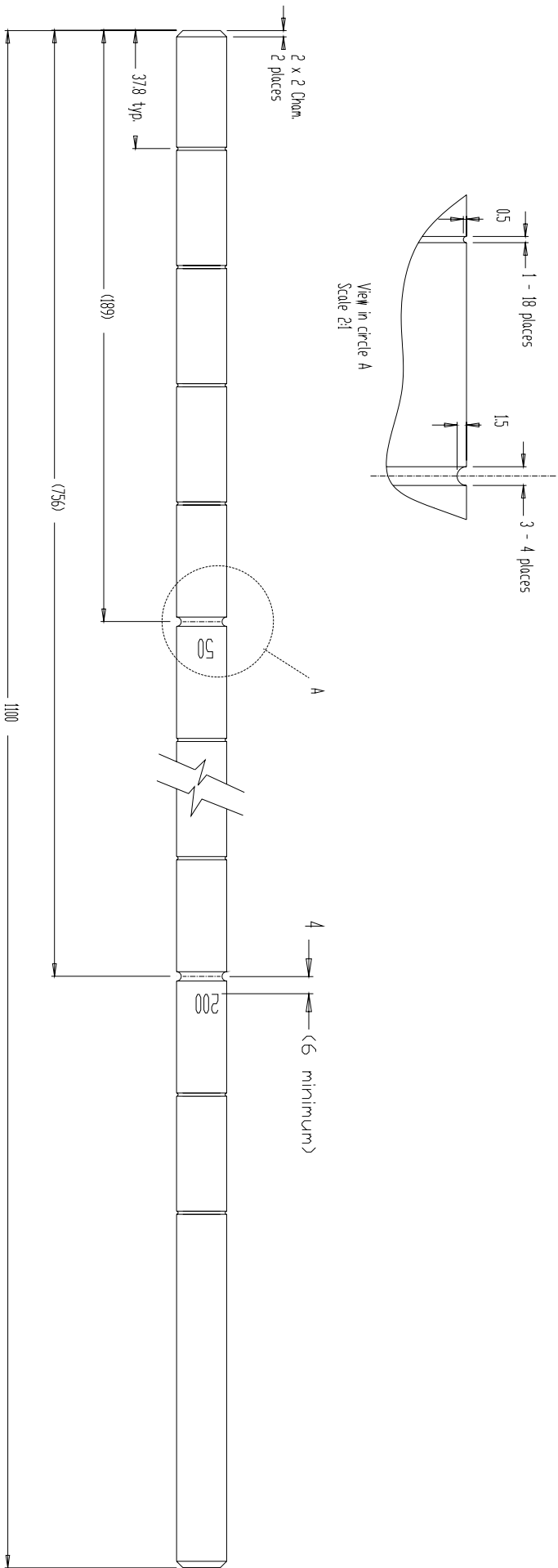
Tel: 27 12 - 481 9030 Fax: 27 12 - 343 7153

email: cidb@cidb.org.za website: www.cidb.org.za

INTRODUCTION to workshop drawings

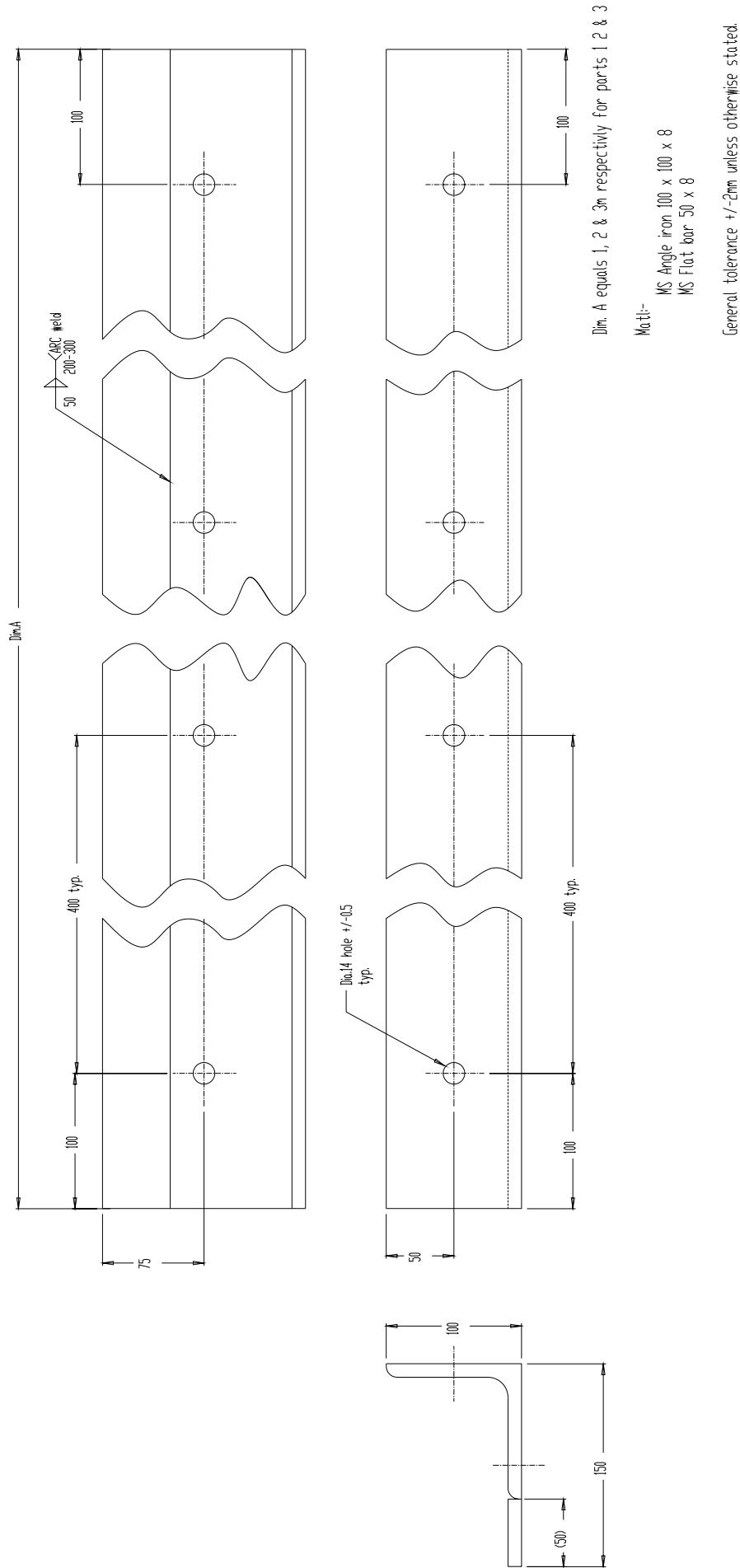
Manual	Module	Workshop drawing	Manual	Module	Workshop drawing
Manual 3	Module 2	LIC 006	Manual 4	Module 3	LIC 001
	Module 3	LIC 002			LIC 007
		LIC 003			LIC 008
		LIC 004			LIC 010
		LIC 005		Module 4	LIC 004
		LIC 006			LIC 005
	Module 4	LIC 002			LIC 007
		LIC 003			LIC 008
		LIC 004			LIC 009
		LIC 005		Module 5	LIC 005
		LIC 006			LIC 007
	Module 5	LIC 001			LIC 008
		LIC 002			LIC 009
		LIC 004			LIC 010
		LIC 005		Module 6	LIC 008
		LIC 009			LIC 010
		LIC 031			
	Module 5.1	LIC 002			
		LIC 031			
	Module 5.2	LIC 001			
		LIC 002			
		LIC 004			
		LIC 005			
		LIC 009			
		LIC 031			






Letters to be clearly stamped 50 / 100 / 150 / 200
at intervals of 189mm. Letter height to be 6mm min.
General tolerance +/-1mm unless otherwise stated.

		MATERIAL	- Dia. 16 Aluminium rod		
PROJECT - 59C2012		DESCRIPTION	- Dipstick 220 litre		
DRAWN	A CRAWFORD	SIZE	DWG NO.	LIC001	
		A3		SCALE - N.T.S.	DATE - Dec.05
					SHEET
					REV



		MATERIAL	- See notes above				
PROJECT		- 59C2012		DESCRIPTION		- Shutter	
DRAWN		A CRAWFORD		SIZE A3	DWG NO.	LIC002	
		SCALE - N.T.S.		DATE	- Dec.05		SHEET
				REV			

50
200 - 300
ARC weld

(6)
(8)
(8)
50
(75)
(75)

A

100
500 t.p.
Dim A

ARC weld


Dim A equals 1, 2 & 3m respectively for parts 1, 2 & 3

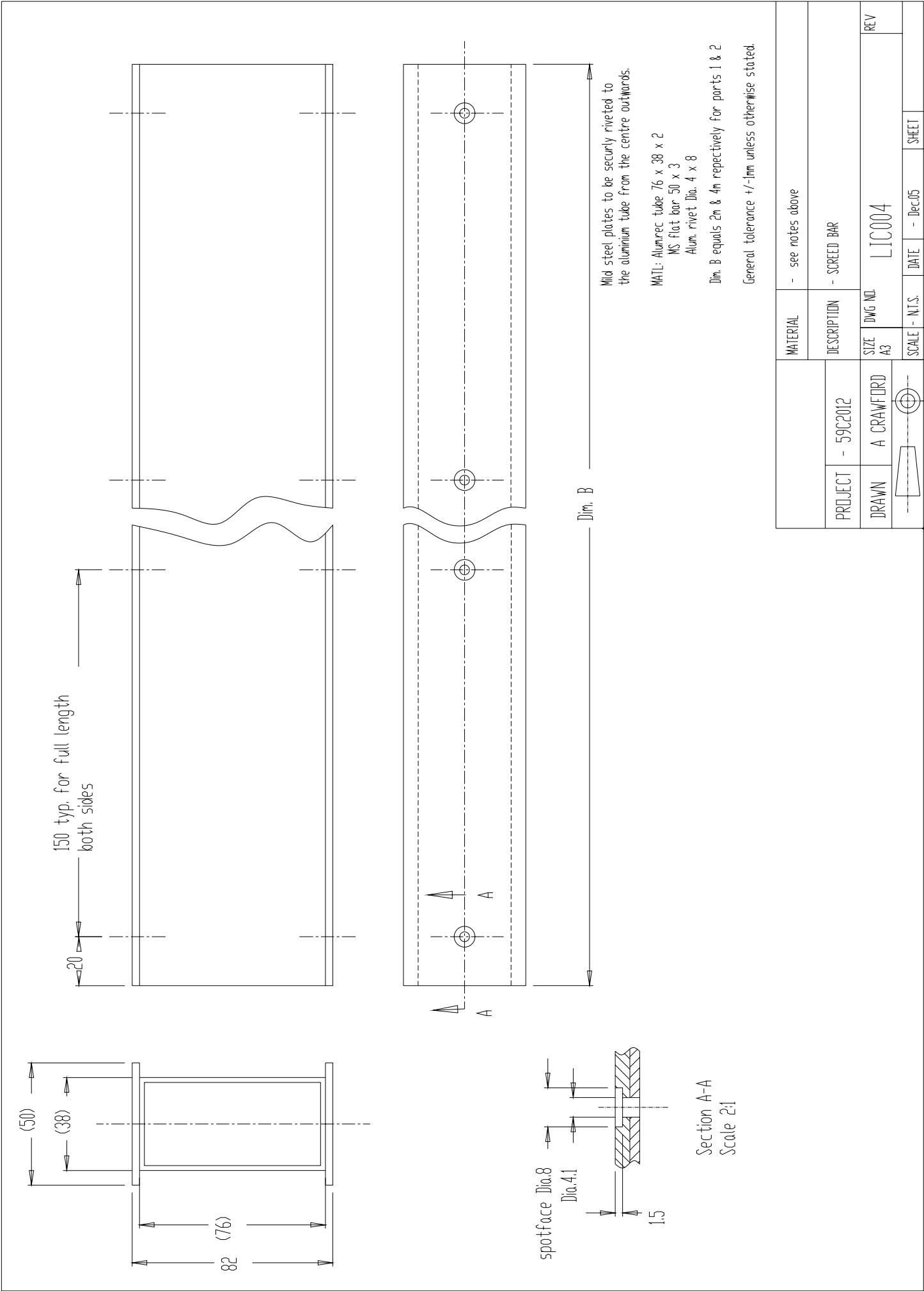
Multi-

MS flat bar 75 x 8
MS flat bar 75 x 8
MS flat bar 75 x 6

General tolerance +/- 0.5mm unless otherwise stated.

PROJECT - 59C2012		MATERIAL - See note above	
DRAWN A CRAWFORD		DESCRIPTION - Bulking rail spacer - 75mm	
SIZE A3	DWG NO. LIC003	SCALE - N.T.S.	DATE - Dec.05
SHEET		REV	

		MATERIAL		- See note above	
PROJECT	- 59C2012	DESCRIPTION		- Building rail spacer - 75mm	
DRAWN	A CRAWFORD	SIZE	DWG NO.	LIC003	
		SCALE	N.T.S.	DATE	- Dec.05
				SHEET	
		REV			



The drawing consists of three views: a front elevation, a side elevation, and a top view.

Front Elevation: Shows a triangular frame with a base of 348 and a height of 180. The top horizontal member has a total length of 295. The top member is composed of two angled sections meeting at a central vertical weld. The radius of the top member is R 50. The bottom horizontal member is 348 long. The side members are angled. A note indicates 'Welds to suit mill - 50p'.

Side Elevation: Shows the profile of the structure, indicating a height of 180 and a base of 348. It shows the thickness of the members and the welds.

Top View: Shows the base of the structure, which is 400 wide. It features a central hole with a diameter of 22.5. The distance from the center of the hole to the side edges is 20. The top view also shows the welds and the overall dimensions of the base.

Material Specifications:

- Matl: Dia.22 Galv. tube
- Dia.10 MS rod
- 8x75 MS flat bar
- 3x30 MS flat bar

General Tolerance: +/- 1mm unless otherwise stated.


Part to be free of burrs and sharp edges.

Notes:

- Welds to suit mill - 50p
- Welds to suit mill - 50p
- Welds to suit mill - 50p

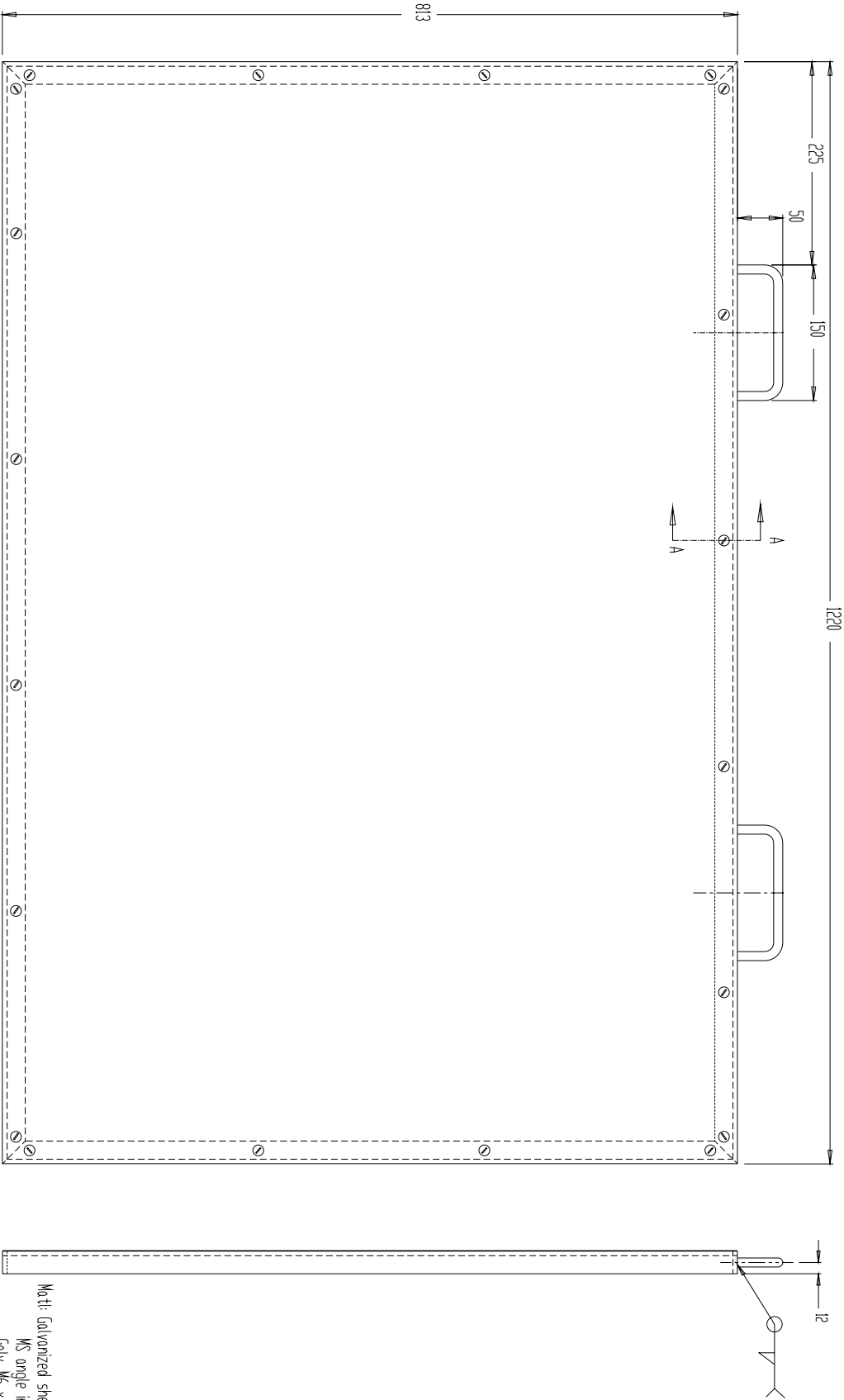
Table:

PROJECT		DESCRIPTION		MATERIAL	
PROJECT	59C2012	DESCRIPTION	- See note above		
DRAWN	A CRAWFORD	SIZE	DWG NO.	REV	
SCALE	N.S.	DATE	- Dec.05	SHEET	

		MATERIAL		- See note above	
PROJECT		DESCRIPTION			
5952012		- Squeggi steel			
DRAWN		SIZE		REV	
A CRAWFLRD		DWG. NO.			
		A3		L1C005	
		SCALE - 1:1		DATE - Dec.05	
		SHEET			

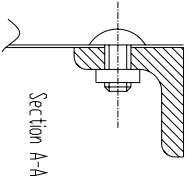
[illegible]

Dimension 'D'	Camber Board
115	2%
135	3%
145	3.5%

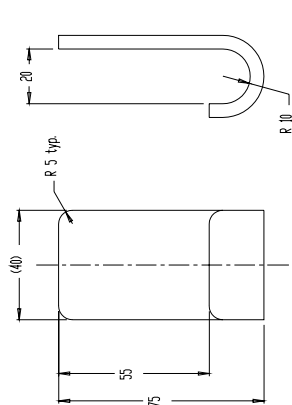


Mat: Galvanized sheet t = 0.6mm
MS angle iron 25x25x5
galv. M6 x 10 gutter bolt & nut
MS Dia.10 rod

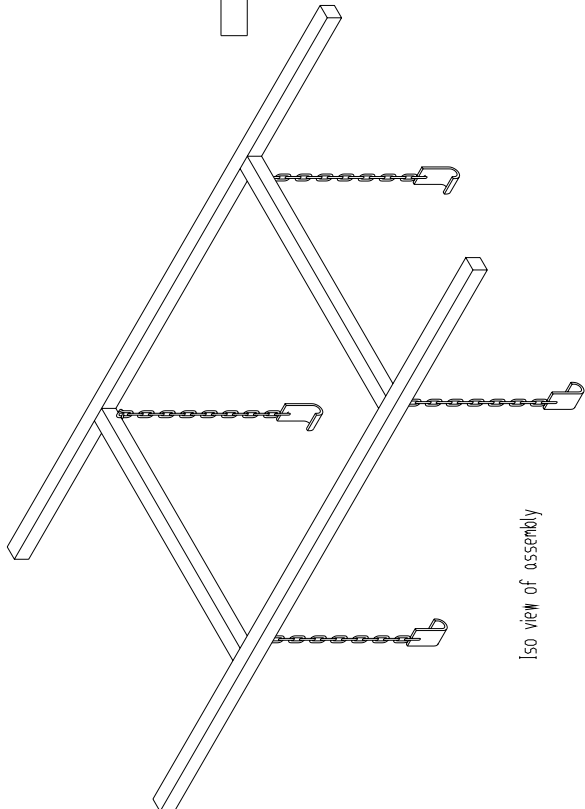
General tolerance +/-0.5mm unless otherwise stated.



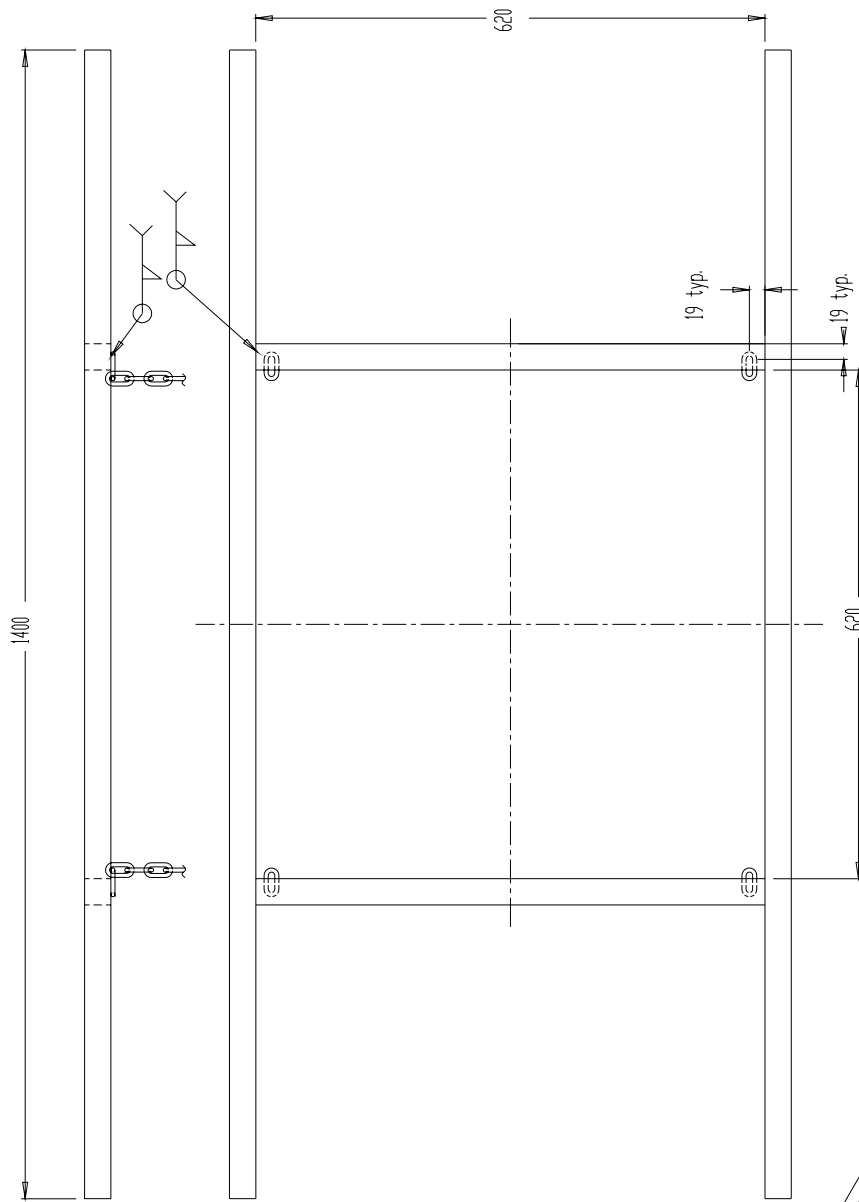
PROJECT - 59C2012		MATERIAL - See notes above	
DRAWN A CRAWFORD		DESCRIPTION - Spray Screen	
SIZE A3	DWG NO.	LIC007	REV
SCALE - N.T.S.	DATE - xxx	SHEET	



Bracket detail
Qty. = 4
Matl: MS flat bar 40 x 5
Chain to be securely welded to bracket



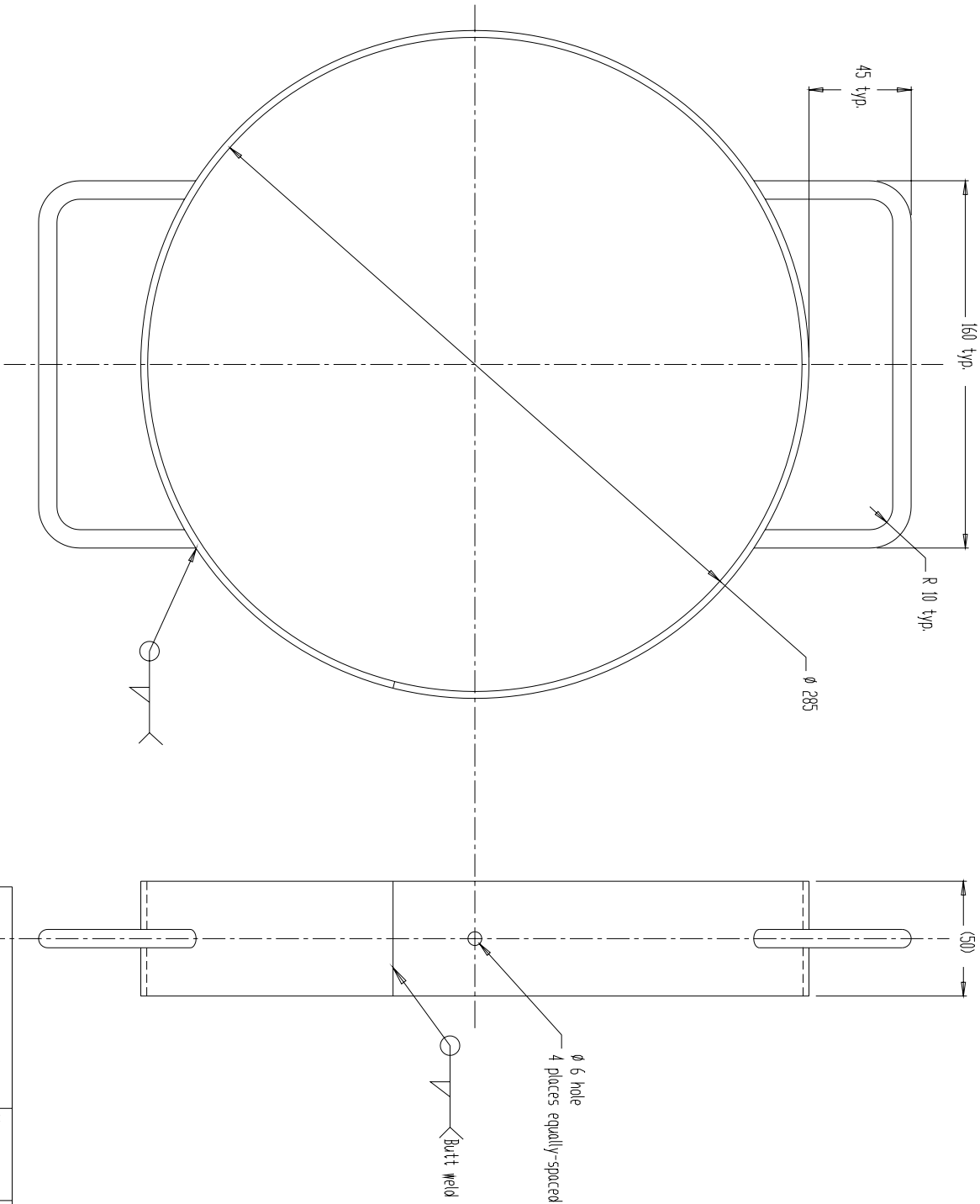
Isometric view of assembly



Matl: MS square tube 32x32x2
Chain 19mm length = 500mm (x4)

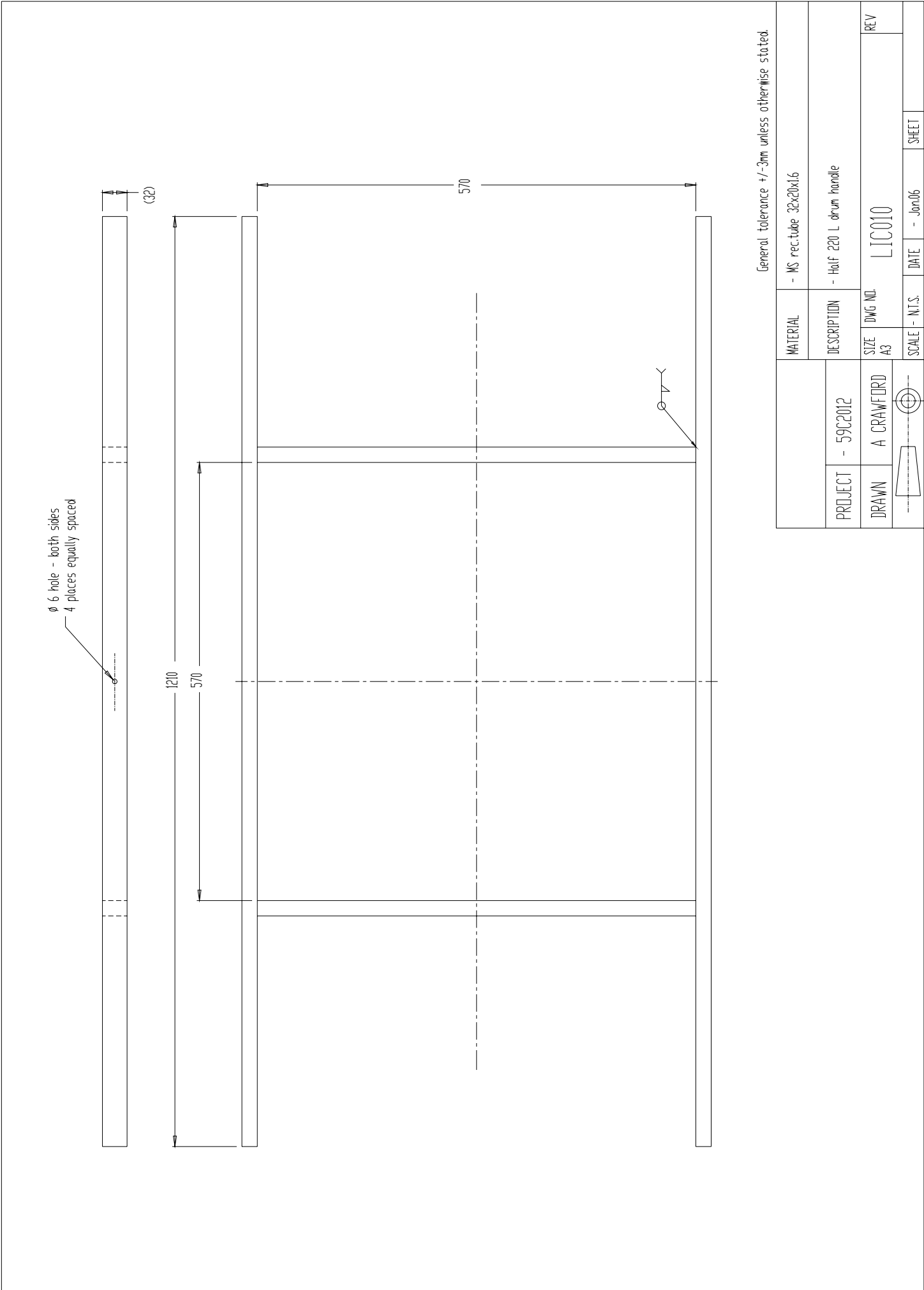
General tolerance +/-1mm unless otherwise stated.

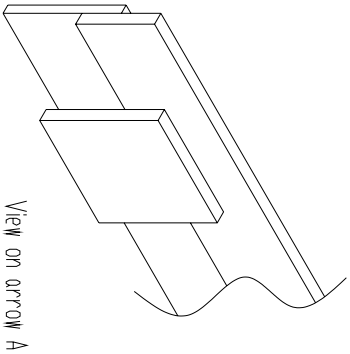
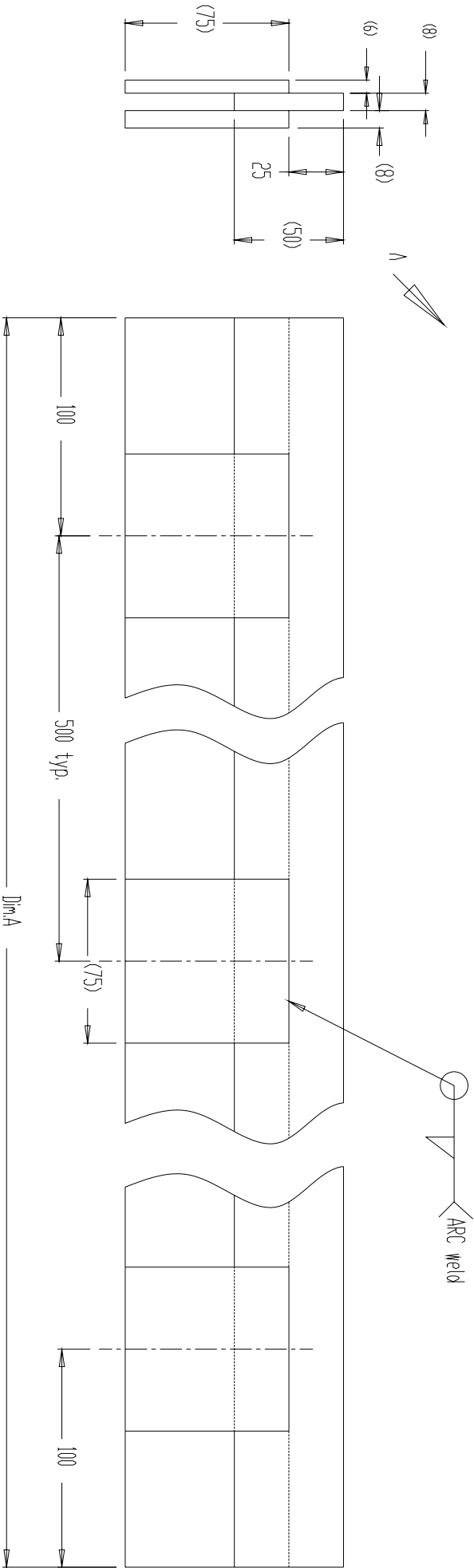
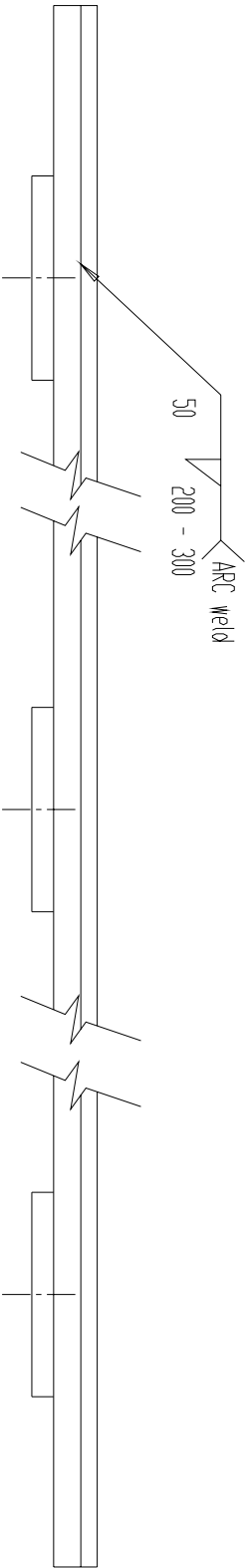
PROJECT - 59C2012		MATERIAL	- See note above.		
DRAWN A CRAWFORD		DESCRIPTION	- Drum lifter		
SIZE A3		DWG NO.	LIC008		
SCALE - N.T.S.		DATE	- Jan06		
SHEET		REV			



PROJECT - 59C2012		MATERIAL		- See note above	
DRAWN A CRAWFORD		DESCRIPTION		- 20 / 25 L drum handle	
SIZE A3		DWG NO		LIC009	
SCALE - N.T.S.		DATE		- Jan16	
SHEET		REV			

Workshop drawing LIC 010





PROJECT - 59C2012		MATERIAL - See note above	
DRAWN A CRAWFORD		DESCRIPTION - Bulking rail spacer - 50mm	
SIZE A3		LIC0031	
SCALE - N.T.S.		DATE - Dec05	
SHEET		REV	

General tolerance +/-0.5mm unless otherwise stated.

Note:-

- MS Flat bar 50 x 8
- MS Flat bar 75 x 8
- MS Flat bar 75 x 6

Dim A equals 1, 2 & 3m respectively for parts 1, 2 & 3

“We have made the firm commitment to confront the challenges of poverty and joblessness. We have made the solemn pledge that we will do everything possible to achieve the goal of a better life for all our people.”

President Thabo Mbeki